

1452 West Fullerton • Unit #4 • Chicago, IL 60614



Sexton[®]
PROPERTIES

Exceeding Your Expectations



Penthouse Condominium Residence

1452 WEST FULLERTON • UNIT #4 • CHICAGO, IL 60614

General Home Features

- Approximately 2,273 square feet on two levels
- Approximately 605 square feet of balconies
- Three bedrooms; two bedrooms on the 4th level and one bedroom on the 5th level
- Three full baths; two bathrooms on the 4th level and one bathroom on the 5th level
- Private elevator which opens directly into the unit
- Approximately 12 foot ceilings on both levels
- Solid masonry building with brick and limestone on the front elevations
- Two assigned parking spaces; one inside garage space and one outside space
- Dedicated laundry room with a Whirlpool front-loading washer and dryer, a Whirlpool Personal Valet clothes steamer, large porcelain "laundry sink", an in-wall vacuum system and pantry storage
- Oak flooring throughout the common areas including two oak staircases
- Lavish master bath with steam shower, rain shower, six body sprays, a 19" High Definition water-proof LCD flush mounted TV in the shower, dual vanities, 90 gallon Whirlpool tub and a 32" High Definition LCD TV mounted above the tub
- Custom built laminate closet shelving systems
- Living room fireplace with a granite surround and custom glass doors
- Gravity fed re-circulating hot water system throughout the house with ¾" valves to all shower and tub fixtures with 50+ psi water pressure to all fixtures
- Radiant heated floors throughout all 3 bathrooms with programmable thermostats
- Whole house audio/video distribution including a 177" movie screen and high definition projector on the fifth level

Brynn Daniels

MANAGING REAL ESTATE BROKER

bdaniels@sextoncompanies.net

(847) 651-4567

www.sextoncompanies.net



Front Entry & Ground Level Features

- Outdoor stainless steel telecom entry system
- Front foyer includes a slate floor accented with 6" stone base moldings as well as slate walls capped with 4" stone picture frame rails
- Flush mounted keyed mailbox with an outgoing mail slot
- Private elevator entry through the foyer
- Carpeted front stairwell
- Commercial-grade water pressure booster pump
- Private assigned storage closet 4 feet wide by 4 feet deep by 8 feet tall with a 1-3/8" steel door accompanied by a keyed handle and deadbolt in satin nickel

Living Room / Family Room Features

- Private elevator which opens directly into the unit
- Living room fireplace capable of burning gas or wood logs finished with an oak mantel surround and granite insets along with a custom fit vintage iron bezel with grey bi-fold glass doors
- 1¼" "Blue Sapphire" granite window and door sills throughout with ogee cut finished edges
- Custom oak built-in cabinet to the left of the fireplace designed and pre-wired to accommodate multiple audio / video components including a subwoofer
- Custom oak built-in cabinet to the right of the fireplace designed as a small bar display with a dimmable halogen light
- Exposed common brick on both the south and east walls
- Oak flooring finished with two coats of Synteko finish
- Wired for 5.1 surround sound
- Three flush mounted in-wall Energy Veritas speakers painted to match the walls
- Two wall-mounted rear M&K tripole speakers
- Private 4' x 8' deck with a built-in gas grill by Weber
- Phantom screen installed on slider door out to deck

Brynn Daniels

MANAGING REAL ESTATE BROKER

bdaniels@sextoncompanies.net

(847) 651-4567

www.sextoncompanies.net



Penthouse Condominium Residence

1452 WEST FULLERTON • UNIT #4 • CHICAGO, IL 60614

Custom Kitchen Features

- Tiered 8' custom built wood cabinetry with crown molding finished in "Cherry Manchester Cider"
- 1 ¼" "Blue Sapphire" granite countertops including a granite window sill with a matching waterfall design down to the kitchen countertop
- Large two-tier center island with 1 ¼" "Blue Sapphire" granite countertops, built-in electric in the backsplash and plenty of storage and drawers
- 36" GE Profile refrigerator/freezer finished in stainless steel
- 24" GE Profile dishwasher finished in stainless steel
- 30" GE Profile microwave flush fit into the cabinetry and finished in stainless steel
- 36" GE Profile gas range and oven finished in stainless steel
- In-SinkErator garbage disposal
- In-SinkErator hot water dispenser finished in chrome capable of delivering 190° water instantly
- Large Franke double bowl under mount stainless steel sink
- Grohe pull-out faucet spray handle in chrome
- Commercial grade True Keggerator capable of holding one 1/2 barrel or two 1/6 barrels with a custom designed flush two-tap beer tower installed in a 1 ¼" "Blue Sapphire" granite with a "Cherry Manchester Cider" cabinet enclosure

Laundry / Kitchen Pantry Room Features

- Custom built laundry sink vanity finished in "Cherry Manchester Cider" and 1 ¼" "Sapphire Blue" granite with a 3" backsplash
- Pantry cabinetry finished in "Cherry Manchester Cider"
- Whirlpool Personal Valet clothes steamer
- Stacked Whirlpool washer and dryer
- In-wall vacuum system by CubbyVac
- Large porcelain "laundry sink" finished in white
- Moen faucet with pull-out spray finished in white
- 12" x 12" Crème Cappuccino polished marble floor

Brynn Daniels

MANAGING REAL ESTATE BROKER

bdaniels@sextoncompanies.net

(847) 651-4567

www.sextoncompanies.net



Powder Room Features

- Custom built 36" high maple vanity finished in "Dulce"
- Kohler toilet with elongated bowl and Quiet Catch seat
- 14" x 8" hammered cooper sink finished in satin nickel
- 1¼" thick "Volgo Green" granite countertops with ogee edging and electrical outlets flush mounted into a 5" backsplash
- Wall mounted faucet finished in satin nickel
- One ¾" Grohe thermostat & two ¾" valves finished in satin nickel in the shower
- One Grohe Movario 5-Position showerhead finished in satin nickel
- Two adjustable Grohe body sprays finished in satin nickel
- Satin nickel knobs and hardware throughout
- ½" glass shower door with satin nickel parts
- 12" x 12" Crème Cappuccino polished marble walls
- One stone wall "Rug" in the shower made up of 1" x 1" crushed glass mosaics, 5/8" x 5/8" polished Emperador mosaics, a 1-½" x 8" crushed glass Verde listello, 3" nickel medallions and Ivory chair rails
- 1" x 12" Verde Green polished marble pencil rails and 12" x 12" Verde Green polished marble tiles makeup the floor's boarder and baseboard
- 5/8" x 5/8" Cream Light polished marble makeup the center of the floor
- Radiant heated floor with adjustable thermostat

Third Bedroom Features

- 7-piece custom designed wood wainscot bordering the entire room
- Triple crown molding bordering the entire ceiling
- One Casablanca ceiling fan trimmed out in satin nickel with above and below lighting
- Built-out custom closet in white laminate
- Quiet Rock sound dampening drywall throughout

Brynn Daniels

MANAGING REAL ESTATE BROKER

bdaniels@sextoncompanies.net

(847) 651-4567

www.sextoncompanies.net



Penthouse Condominium Residence

1452 WEST FULLERTON • UNIT #4 • CHICAGO, IL 60614

Second Bedroom Features

- Private 4' x 10' deck
- Phantom screen installed on slider door out to deck
- 1¼" thick "Bordeaux" granite door and window sills with an ogee edge
- Partially built-out custom closet in white laminate
- One Casablanca ceiling fan trimmed out in satin nickel
- Wired for 5.1 surround sound
- Three flush mounted Jamo 661K4 in-wall speakers
- Two rear SS-150THX dipole speakers by M&K
- 32" Sharp High Definition LCD TV with slim mount

Second Bedroom Bathroom Features

- Custom built 36" high wood vanity finished in "Cherry Manchester Cider"
- 1¼" thick "Cafe Imperial" granite countertop with a banjo cut and 3" backsplash
- 12" x 12" honed Crater Travertine stone and 1/2" x 1/2" Tuscany Walnut mosaics make up the walls and floors
- 12" x 12" honed Ivory stone, Ivory Alpaca pencil rails and 3" wide Ivory Travertine frames make up the all-stone crown molding
- One stone wall "Rug" in the shower made up of Ivory Rhomboid mosaics, 5/8" x 5/8" Alpaca pencil rails, polished Crater Travertine & Tuscany Walnut chair rails
- Kohler faucet finished in satin nickel
- Kohler toilet with elongated bowl and Quiet Catch seat
- Kohler under mount 14" oval sink in white
- Satin nickel knobs and hardware throughout
- One 3/4" Grohe thermostat & three 3/4" valves finished in satin nickel in the shower
- One Grohe Movario 5-Position adjustable showerhead finished in satin nickel
- Four adjustable Grohe body sprays finished in satin nickel
- Radiant heated floor with adjustable thermostat

Brynn Daniels

MANAGING REAL ESTATE BROKER

bdaniels@sextoncompanies.net

(847) 651-4567

www.sextoncompanies.net



Master Bathroom Features

- Custom built 36" high dual wood vanity finished in "Manchester Maple Cafe Licorice"
- 1¼" thick "Blue Eyes" granite countertops with ogee edging and electrical outlets flush mounted into a 5.75" backsplash
- 5/8" x 5/8" Emperador Marble mosaics with Tuscan Walnut pencil & chair rails makeup the listello which borders the entire room and shower
- A 12" x12" honed Noce Alpaca Travertine stone accompanied by 6" tall Tuscan Walnut Travertine baseboards and 3" wide Tuscan Walnut Travertine frames make up the remaining bathroom including the shower entrance and mirror frames
- 19" waterproof high definition LCD TV in the shower
- Two 12" waterproof Jamo speakers in the shower with adjustable volume control
- Two 6" x 10" in-wall room speakers by M&K with adjustable volume control
- One Grohe Movario 5-Position showerhead finished in satin nickel
- Six Grohe body sprays finished in satin nickel
- One Grohe 12" rain showerhead finished in satin nickel
- Steam shower with controls finished in satin nickel including an auto-flush system
- Two steam shower Chromo therapy adjustable lights
- 1/2" glass shower door with satin nickel parts
- 90-Gallon Pearl whirlpool tub trimmed out with satin nickel controls which includes a recirculation heat pump and a satin nickel roman faucet and hand spray by Kohler
- Two Kohler under mount 18" x 12" sinks in white
- Two Kohler faucets finished in satin nickel
- Satin nickel knobs and hardware throughout
- Kohler toilet with elongated bowl and Quiet Catch seat
- Built-in wall cabinetry finished in "Manchester Maple Cafe Licorice" for toiletries
- 32" Toshiba high definition LCD TV mounted above the whirlpool
- Radiant heated floor and granite shower bench with adjustable thermostat

Brynn Daniels

MANAGING REAL ESTATE BROKER

bdaniels@sextoncompanies.net

(847) 651-4567

www.sextoncompanies.net



Penthouse Condominium Residence

1452 WEST FULLERTON • UNIT #4 • CHICAGO, IL 60614

Master Bedroom Features

- Two massive private decks directly off of the bedroom
- Phantom screen installed on slider door out to the south deck
- 1¼" thick "Volga Blue" granite window and door sills
- 1¼" thick "Volga Blue" granite with ogee edges capping off two half-walls
- Custom built 36" high corner desk finished in "Cherry Manchester Cider" with a 1¼" thick "Black Pearl" granite top
- Custom built 7 foot-long hutch with crown molding wall-mounted above the corner desk with built-in low-voltage lighting finished in "Cherry Manchester Cider"
- Massive built-out walk-in closet made of oak and oak laminate
- Wired for 7.2 surround sound
- Five SS-5000THX M&K speakers
- Two SS-500THX M&K speakers
- One MX-200 Subwoofer
- A 177" (14 foot - 9 inch) Firehawk movie screen by Stewart
- Two Casablanca matching ceiling fans trimmed out in satin nickel
- Automated light shade by Lutron with remote control
- 15-foot long 600 watt low voltage curved monorail track lighting system with 9 bell-shaped mounted lights finished in satin nickel
- Ceiling mounted Sony LCD high definition projector

Media Room Features

- Audio/Video control room for the master bathroom, both 5th level decks and the master bedroom
- Custom built-in wall cabinetry to hold Audio / Video equipment as well as music and movie media with hidden hinge to allow access to the back of the components
- Audiophile-grade Audio / Video system that runs the entire 5th level included
- Digital keypad entry system to the room with a 5-second auto-locking feature

Brynn Daniels

MANAGING REAL ESTATE BROKER

bdaniels@sextoncompanies.net

(847) 651-4567

www.sextoncompanies.net



5th Level North & South Deck Features

- Panoramic views of the entire City
- 100% masonry half walls finished with limestone copings and iron railings
- One frost-proof hose bib on each deck
- Electrical outlets on each deck
- One pair of Infinity Outrigger outdoor speakers on each deck
- One adjustable volume control on each deck
- South deck pre-wired with a 220V junction box for a future hot tub connection
- Both decks finished with Trex composite decking
- Privacy walls on both decks made from Trex composite decking

Additional Interior Features

- 8' tall 1-3/4" thick, solid core doors throughout
- 7 1/4" high painted base boards throughout
- Granite window and door sills throughout
- Satin nickel door hardware throughout
- Tinted windows and doors throughout
- One primer coat and two finish coats of paint on all walls and ceilings
- Two 75-Gallon Bradford White hot water heaters running in tandem
- One digital HVAC thermostat on each level
- Solid concrete floors between levels
- 10-foot long, 300 watt, low voltage, straight, monorail track lighting system with 4 smoked white glass pendant lights trimmed in satin nickel in the main level hallway
- 200 Amp electrical service
- Lutron dimmer switches throughout & Decora switches and outlets throughout
- Second in-wall CubbyVac located in a fifth floor utility room with tons of storage
- Hard wired smoke and carbon monoxide detectors on each level per City code
- State of the art alarm system with:
 - Five alpha-numeric keypads throughout
 - Contacts on all doors of the house
 - Motion detectors on the fourth and fifth levels
 - Tellguard cellular back-up in case phone lines are cut or disrupted
 - Additional heat and carbon monoxide detectors to work in accordance with the alarm

Brynn Daniels

MANAGING REAL ESTATE BROKER

bdaniels@sextoncompanies.net

(847) 651-4567

www.sextoncompanies.net



Penthouse Condominium Residence

1452 WEST FULLERTON • UNIT #4 • CHICAGO, IL 60614

Premier Low Voltage and Audio/Video Features

- Two Open House low voltage panels conveniently hidden to accommodate where all of the networking cables terminate
- Cat5 phone wiring throughout home
- RG6 cable wiring throughout home
- Adjustable in-room volume control for the master bathroom shower speakers
- Adjustable in-room volume control for the master bathroom speakers
- Adjustable outdoor volume controls for both the north & south decks
- Video equipment throughout:
 - Fourth Level Second Bedroom - Sharp 32" HD LCD
 - Fifth Level Master Bathroom - Toshiba 32" HD LCD
 - Fifth Level Master Bathroom - Waterproof 19" HD LCD
 - Fifth Level Media Closet - Colby 15" HD LCD
 - Fifth Level Master Bedroom - 177" (14 foot - 9 inch) Firehawk Screen
 - Fifth Level Master Bedroom - Sony LCD HD Projector
- Speaker equipment throughout:
 - Fourth Level Family Room - 3 in-wall 2.3WM Energy Veritas speakers
 - Fourth Level Family Room - 2 SS-150THX tripole M&K speakers
 - Fourth Level Second Bedroom - 3 in-wall 661K4 Jamo speakers
 - Fourth Level Second Bedroom - 2 SS-150THX dipole M&K speakers
 - Fifth Level Master Bathroom - 2 in-ceiling 8.5A2 Jamo speakers
 - Fifth Level Master Bathroom - 2 in-wall SW-85 M&K speakers
 - Fifth Level Master Bedroom - 5 SS-5000THX M&K speakers
 - Fifth Level Master Bedroom - 2 SS-500THX M&K speakers
 - Fifth Level Master Bedroom - 1 MX-200 Subwoofer

Brynn Daniels

MANAGING REAL ESTATE BROKER

bdaniels@sextoncompanies.net

(847) 651-4567

www.sextoncompanies.net



Penthouse Condominium Residence

1452 WEST FULLERTON • UNIT #4 • CHICAGO, IL 60614

Premier Low Voltage and Audio/Video Features *continued*

- Audio equipment throughout:
 - Fifth Level Media Closet - Denon AVR-4306 Receiver
 - Fifth Level Media Closet - Carver AV-705X Amplifier
 - Fifth Level Media Closet - Panamax 5300 Surge Protector
 - Fifth Level Media Closet - Geffen HD Matrix Switcher
 - Fifth Level Media Closet - Niles HDL-4 Distribution Amplifier
 - Fifth Level Media Closet - Sony PlayStation 3 Blu-ray Disc Player
 - Fifth Level Media Closet - Sony CDP-M555ES 400 Disc Player
 - Fifth Level Media Closet - Prewired for Apple TV
 - Fifth Level Media Closet - Prewired for HD Cable Box Provider

Brynn Daniels

MANAGING REAL ESTATE BROKER

bdaniels@sextoncompanies.net

(847) 651-4567

www.sextoncompanies.net



Penthouse Condominium Residence

1452 WEST FULLERTON • UNIT #4 • CHICAGO, IL 60614



Kitchen



Skyline View from Deck



**Custom
Built-In
Office**

Brynn Daniels

MANAGING REAL ESTATE BROKER
bdaniels@sextoncompanies.net

(847) 651-4567

www.sextoncompanies.net



Penthouse Condominium Residence

1452 WEST FULLERTON • UNIT #4 • CHICAGO, IL 60614



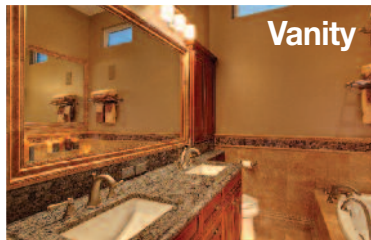
Master Bedroom



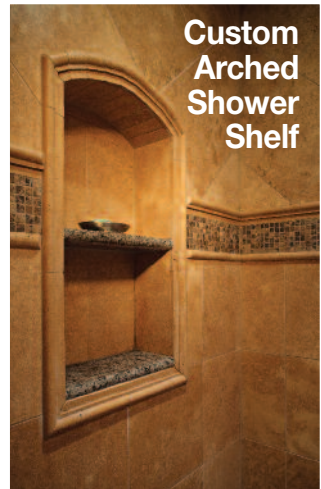
Master Bath



Whirlpool with TV



Vanity



Custom Arched Shower Shelf

Brynn Daniels
MANAGING REAL ESTATE BROKER
bdaniels@sextoncompanies.net

(847) 651-4567
www.sextoncompanies.net



Penthouse Condominium Residence

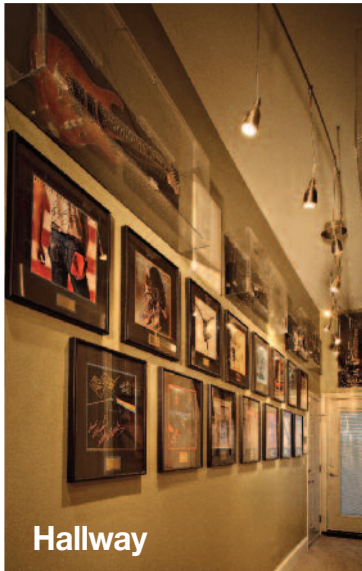
1452 WEST FULLERTON • UNIT #4 • CHICAGO, IL 60614



Living Room



Fireplace & Built-Ins



Hallway

Brynn Daniels

MANAGING REAL ESTATE BROKER
bdaniels@sextoncompanies.net

(847) 651-4567

www.sextoncompanies.net



Penthouse Condominium Residence

1452 WEST FULLERTON • UNIT #4 • CHICAGO, IL 60614



Second Bath Shower



Second Bath Vanity



Second Bedroom

Brynn Daniels

MANAGING REAL ESTATE BROKER
bdaniels@sextoncompanies.net

(847) 651-4567

www.sextoncompanies.net

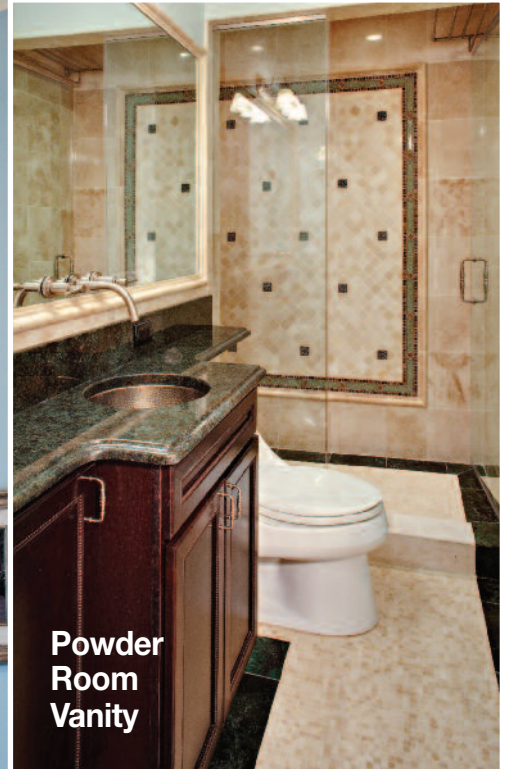


Penthouse Condominium Residence

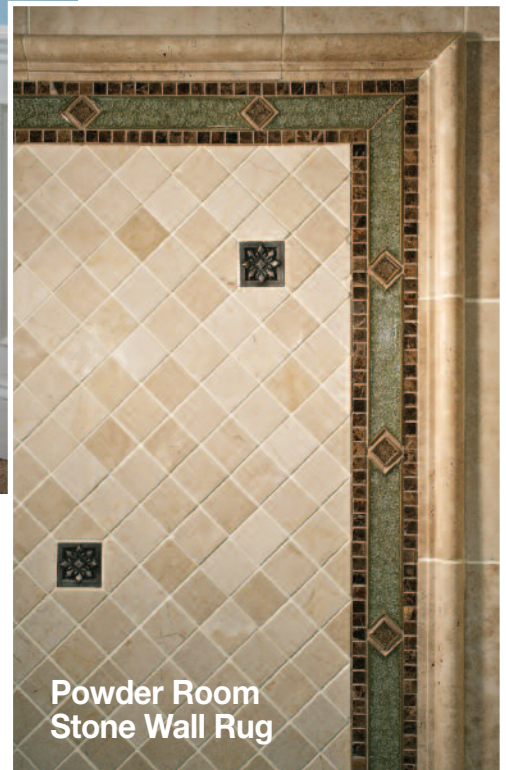
1452 WEST FULLERTON • UNIT #4 • CHICAGO, IL 60614



Third Bedroom



Powder Room Vanity



Powder Room Stone Wall Rug

Brynn Daniels

MANAGING REAL ESTATE BROKER
bdaniels@sextoncompanies.net

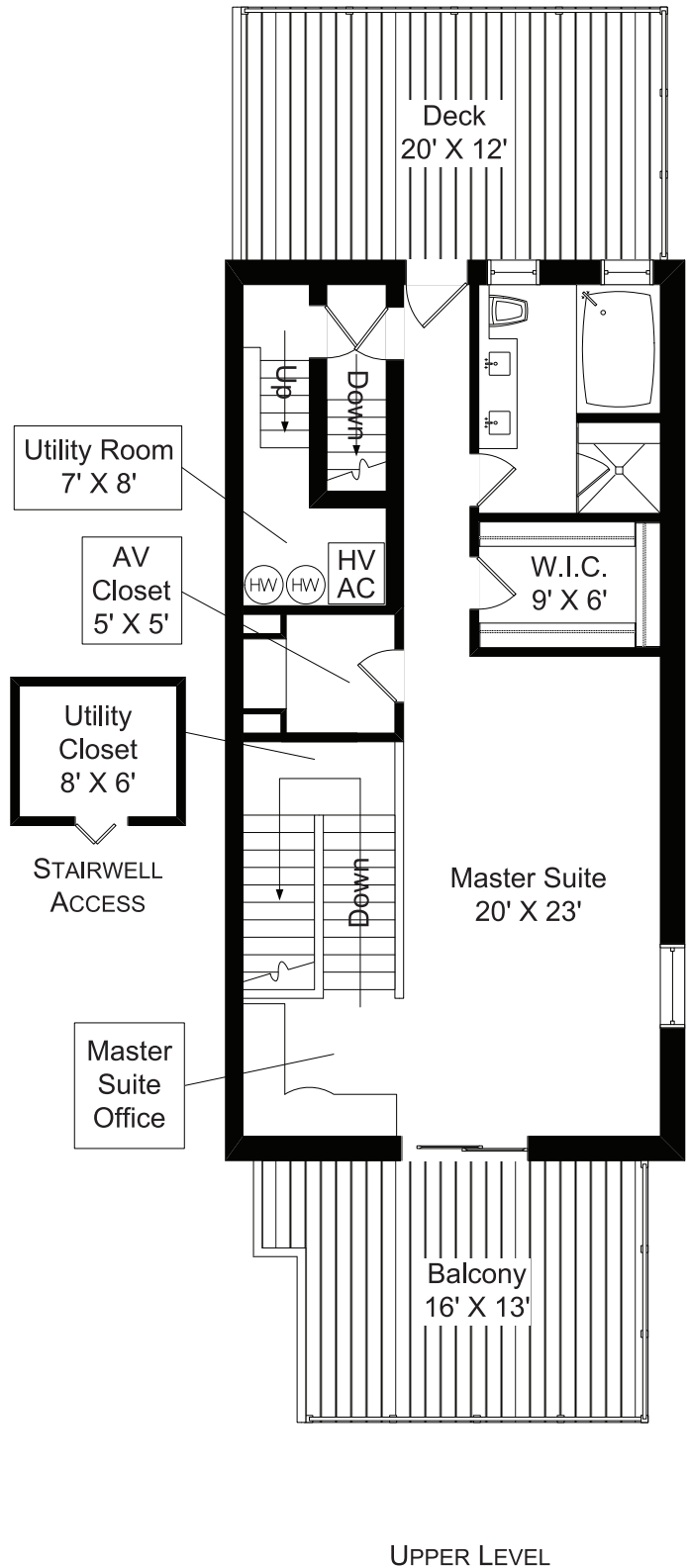
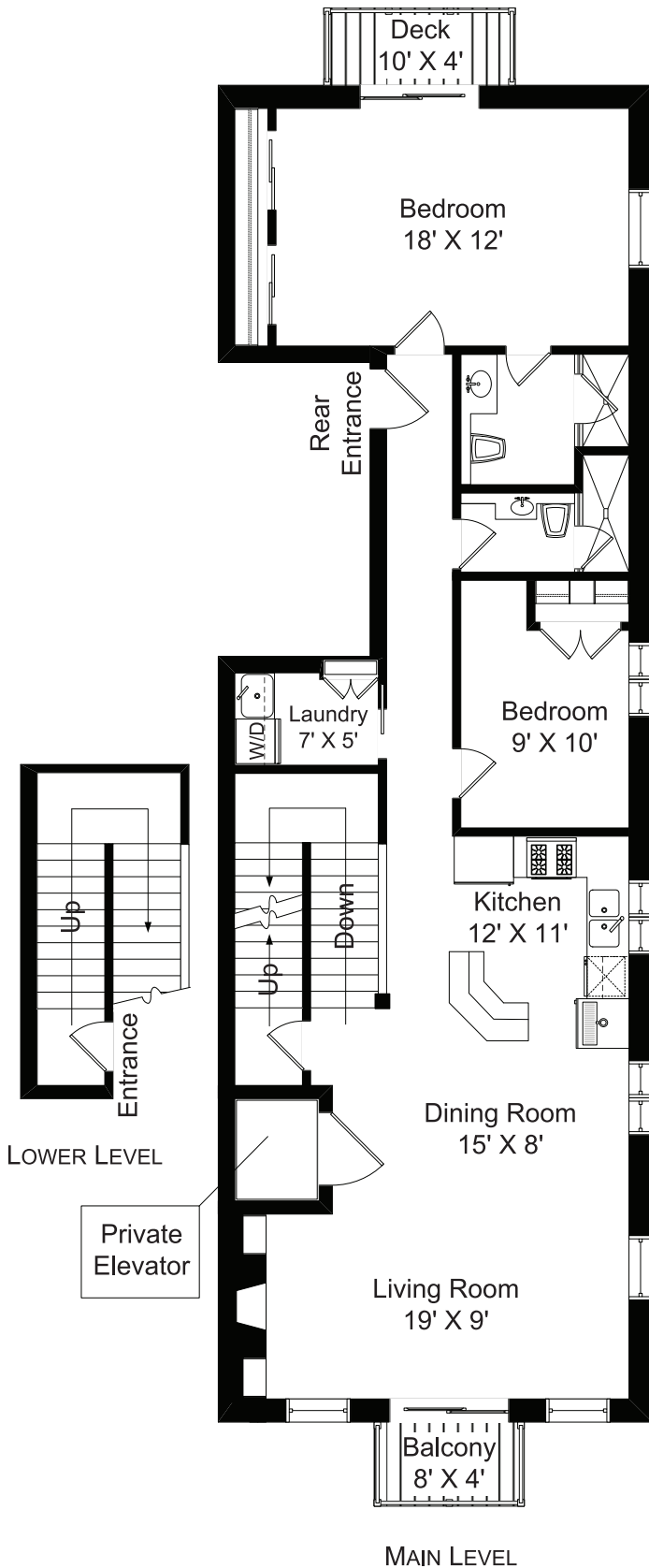
(847) 651-4567

www.sextoncompanies.net



Penthouse Condominium Residence

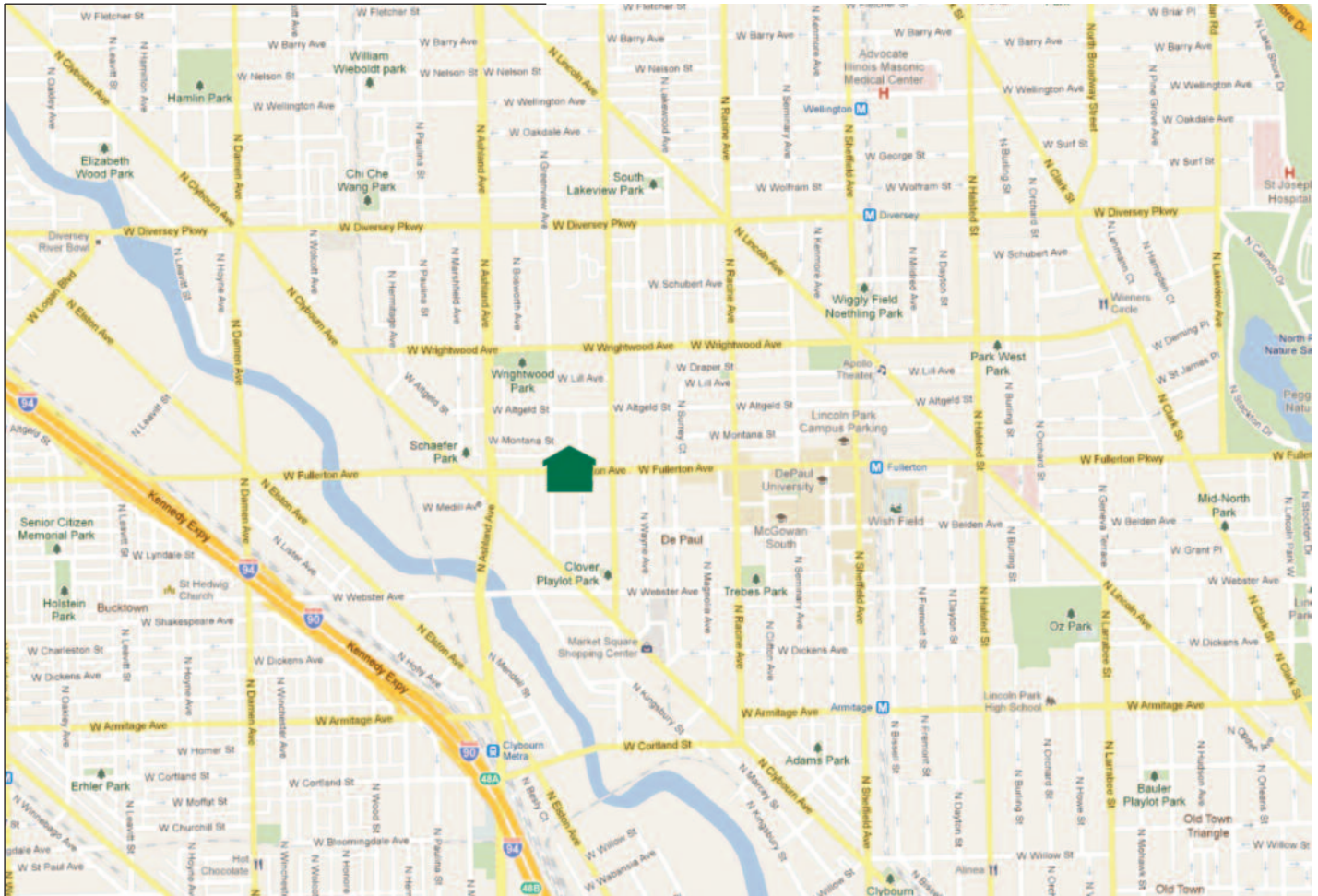
1452 WEST FULLERTON • UNIT #4 • CHICAGO, IL 60614





Penthouse Condominium Residence

1452 WEST FULLERTON • UNIT #4 • CHICAGO, IL 60614



Local Amenities

City Ward#: 32

Alderman: Scott Waguespack
2657 N. Clybourn, 60614, 773 248-1330

Nearest Public High Schools:

Lincoln Park High, 2001 N Orchard St, 1.1 mi SE
Ramirez Computer Hs, 2435 N Western Ave, 0.8mi W

Nearest Private High Schools:

Francis Parker HS, 330 W Webster Ave, 1.8mi E
Josephinum Acd., 1501 N Oakley Blvd, 1.5mi SW
Holy Trinity High, 1443 W Division St, 1.7mi S

Nearest Public Elementary Schools:

Prescott Elem., 1632 W Wrightwood Av, 0.1mi NE
Mayer Elem., 2250 N Clifton Ave, 0.5 mi SE

Nearest Private Elementary Schools:

Cardinal Bernardin Ctr., 1651 W Diversey Pkwy, 0.3mi N
St Josaphat, 2245 N Southport Ave, 0.5mi SE

Nearest Daycare Centers:

St. Vincent DePaul Center, 2145 N Halsted St, 1.3mi E
KinderCare, 1733 N. Marcey St., 1.3mi SE
Ame Wayman Day Care Ctr, 511 W Elm St, 2.0mi SE

Nearest Public Library:

Lincoln Park, 1150 W Fullerton Ave, 312-744-1926, 0.7mi E

Nearest Hospital:

Children's Memorial Hospital, 2300 N Childrens Plz, 0.9mi E

Nearest Major Grocery Stores:

Treasure Island, 2121 N Clybourn Ave, 0.4mi SE
Dominick's, 2550 N Clybourn Ave, 0.5mi W
Aldi, 2600 N Clybourn Ave, 0.5mi W

Nearest Movie Theaters:

Facets Cinematheque, 1517 W Fullerton Ave, 0.3mi SE
Regal Theaters Webster Place 11, 1471 W Webster Ave, 0.5mi SE

Nearest Health Clubs:

Core Connection, 1363 W Fullerton Ave, 0.1mi E
Lakeshore Athletic Club, 1320 W Fullerton Ave, 0.2mi E

Nearest Starbucks:

2454 N Ashland Ave, 0.2mi SE

Nearest CTA Station:

Fullerton, Red, Brown, Purple (Express), 1.0mi E

Nearest Metra Station:

Clybourn, 0.7mi S

Nearest Fire Station:

0.9mi SW

Brynn Daniels

MANAGING REAL ESTATE BROKER
bdaniels@sextoncompanies.net

(847) 651-4567

www.sextoncompanies.net



Penthouse Condominium Residence

1452 WEST FULLERTON • UNIT #4 • CHICAGO, IL 60614

Local Restaurants

Restaurants are sorted by distance to the property in each category.

American/Continental/European

Sprout, 1417 W. Fullerton Ave., 773-348-0706, 0.1mi E
Sweets & Savories, 1534 W. Fullerton Ave., 773-281-6778, 0.1mi W
Trotter's To Go, 1337 W. Fullerton Ave., 773-868-6510, 0.2mi E
Five Guys, 2140 N. Clybourn Ave., 773-327-5953, 0.4mi S
Sweet Mandy B's, 1208 W. Webster Ave., 773-244-1174, 0.4mi SE
John's Place, 1200 W. Webster Ave., 773-525-6670, 0.4mi SE
Dirk's Fish & Gourmet Shop, 2070 N. Clybourn Ave.,
773-404-3475, 0.5mi SE

Chinese

Emperor Wok, 1730 W. Fullerton Ave., 773-388-8800, 0.4mi W
Szechwan's Hunan Cuisine, 2748 N. Lincoln Ave., 773-883-8885, 0.6mi NE
Tsang Chinese Restaurant, 2748 N. Lincoln Ave., 773-975-7618, 0.6mi NE
China Chef, 2922 N. Ashland Ave., 773-871-0730, 0.6mi N
Dee's, 1114 W. Armitage Ave., 773-477-1500, 0.7mi SE
Jade East, 2511 N. Lincoln Ave., 773-883-9797, 0.7mi E
Hoi's Restaurant, 3035 N. Ashland Ave., 773-935-0070, 0.8mi N

Japanese/Sushi

Macku Sushi, 2239 N. Clybourn Ave., 773-880-8012, 0.2mi S
Cafe Furaibo, 2907 N. Lincoln Ave., 773-472-7017, 0.7mi N
Ethan's Restaurant & Cafe, 2201 N. Sheffield Ave., 773-244-9012, 0.7mi E
Kyoto Sushi Restaurant, 2534 N. Lincoln Ave., 773-477-2788, 0.7mi E
In In Restaurant, 2964 N. Lincoln Ave., 773-880-9522, 0.7mi N
Ringo Japanese Restaurant, 2507-09 N. Lincoln Ave.,
773-248-5788, 0.7mi E

Thai/Vietnamese/Asian/Fusion

Lincoln Park's Noodle House, 2428 N. Ashland Ave.,
773-248-6680, 0.2mi W
Thai Wild Ginger, 2203 N. Clybourn Ave., 773-883-0344, 0.3mi S
Duck Walk, 1217 W. Fullerton Ave., 773-327-6200, 0.3mi E
Panda Express, 1730 W. Fullerton Ave., 773-935-6128, 0.4mi W
Barberry Asian Kitchen, 2819 N. Southport Ave., 773-525-6695, 0.5mi N
Jim Noodle & Rice, 2819 N. Lincoln Ave., 773-935-5923, 0.6mi NE
Penny's Noodle Shop, 950 W. Diversey Pkwy., 773-281-8448, 0.8mi NE
Satay, 936 W. Diversey Ave., 773-477-0100, 0.8mi NE

Bar/BBQ/American Regional

Bird's Nest, 2500 N. Southport Ave., 773-472-1502, 0.1mi NE
The Ace Bar, 1505 W. Fullerton Ave., 312-970-1505, 0.1mi W
Small Bar, 1415 W. Fullerton Ave., 773-525-2727, 0.1mi E
Crossing, 2548 N. Southport Ave., 773-327-4900, 0.2mi NE
Flounder's, 2201 N. Clybourn Ave., 773-472-9920, 0.3mi S
Tavish, 1335 W. Wrightwood Ave., 773-529-8888, 0.3mi NE
The Purple Otter, 2706 N. Ashland Ave., 773-248-3331, 0.4mi NW
Gaslight Bar & Grille, 2426 N. Racine Ave., 773-929-7759, 0.4mi E
Rocks Lincoln Park, 1301 W. Schubert Ave., 773-472-7738, 0.4mi NE
Four Shadows Tavern & Grill, 2758 N. Ashland Ave., 773-248-9160, 0.5mi

Pizza

Pequod's Pizza, 2207 N. Clybourn Ave., 773-327-1512, 0.3mi S
Bricks on the Run, 1940 N. Elston Ave., 773-252-2220, 0.5mi S
Sarpino's Pizzeria, 1149 W. Diversey Pkwy, 773-525-5050, 0.6mi NE
Lou Malnati's Pizzeria, 958 W. Wrightwood Ave., 773-832-4030, 0.7mi E
O-Tomat-O Pizzeria, 2436 N. Lincoln Ave., 773-935-7000, 0.8mi E
My Pie Pizza/Li'l Guys Deli, 2010 N. Damen Ave., 773-394-6900, 0.8mi SW
Vini's Pizza, 2429 N. Lincoln Ave., 773-327-0000, 0.8mi E

Mexican/Central/South American

Taco & Burrito House, 1548 W. Fullerton Ave., 773-665-8389, 0.1mi W
El Presidente, 2558 N. Ashland Ave., 773-525-7938, 0.2mi NW
Qdoba, 2191 North Clybourn Ave., 773-472-6374, 0.3mi S
Que Rico!, 2814 N. Southport Ave., 773-975-7436, 0.5mi N
Chipotle Mexican Grill, 2000 N. Clybourn Ave., 773-935-5710, 0.6mi SE
Las Tablas, 2942 N. Lincoln Ave., 773-871-2414, 0.7mi N
Lalo's Restaurant, 1960 N. Clybourn Ave., 773-880-5256, 0.7mi SE
Papacito's, 2960 N. Lincoln Ave., 773-327-5240, 0.7mi N

Middle Eastern/Mediterranean

Branko's, 1118 W. Fullerton Ave., 773-472-4873, 0.4mi E
Maza, 2748 N. Lincoln Ave., 773-929-9600, 0.6mi NE
Angelo's Gyros, 939 W. Diversey Pkwy., 773-549-5123, 0.8mi NE
Ambrosia Cafe, 1963 N. Sheffield Ave., 773-404-4450, 0.8mi SE
Lincoln Town Gyros, 2500 N. Halsted St., 773-929-9411, 0.9mi E
Greektown Gyros, 2500 N. Halsted St., 773-929-9411, 0.9mi E
Athenian Room, 807 W. Webster Ave., 773-348-5155, 0.9mi E

Bakery/Cafe/Deli/Coffee Shop

Potbelly Sandwich Works, 1422 W. Webster Ave., 773-755-1234, 0.3mi S
Uncle Sammy's, 1231 W. Fullerton Ave., 773-525-4800, 0.3mi E
Floriole Cafe & Bakery, 1220 W. Webster Ave., 773-883-1313, 0.4mi SE
The Goddess and Grocer, 2222 N. Elston Ave., 773-292-7100, 0.5mi SW
Fritz Pastry, 1408 W. Diversey Pkwy., 773-857-2989, 0.5mi N
Vivante Chocolatier, 1056 W. Webster Ave., 773-549-0123, 0.6mi SE

Italian

Via Carducci, 1419 W. Fullerton Ave., 773-665-1981, 0.1mi E
Filippo's, 2211 N. Clybourn Ave., 773-528-2211, 0.2mi S
Rose Angelis, 1314 W. Wrightwood Ave., 773-296-0081, 0.3mi NE
Pat's Pizza, 2679 N. Lincoln Ave., 773-248-0168, 0.6mi NE
The Original Gino's East of Chicago, 2801 N. Lincoln Ave.,
773-327-3737, 0.6mi NE
La Salumeria Del Merlo, 2638 N. Lincoln Ave., 773-529-0747, 0.6mi NE
Fiorentino's Cucina Italiana, 2901 N. Ashland Ave., 773-244-3026, 0.6mi N

Brynn Daniels

MANAGING REAL ESTATE BROKER

bdaniels@sextoncompanies.net

(847) 651-4567

www.sextoncompanies.net



Brynn Daniels

MANAGING REAL ESTATE BROKER
bdaniels@sextoncompanies.net

2801 Lakeside Drive, Suite 100
Bannockburn, Illinois 60015-1211

Mobile (847) 651-4567

Fax (224) 212-1914

www.sextoncompanies.net

